



InterRail



40
1972
2012
years on track

InterRail Pass Guide 2012

Contents

Introduction	3
How the InterRail Global Pass works	4
Country Information and Extra Benefits	10
InterRail Global Pass Conditions of Use	29

Every effort has been made to ensure the information in this InterRail Pass Guide is complete and up-to-date. Such information, however, may be subject to change without prior notice, and no guarantee can be made regarding its accuracy or completeness. For more information about Eurail Group G.I.E. and the other products it offers, visit www.eurailgroup.org.



Introduction



Dear InterRail Traveller,

We're delighted that you have chosen to travel with an InterRail Pass, in particular because this year we are celebrating an important milestone. Just 40 years ago the InterRail Pass was introduced into the European market.

Over the past 40 years InterRail has evolved and changed from a Pass valid in 20 European countries, available for youth travellers less than 21 years only, to a Pass now valid in 30 European countries and available to all ages wanting to experience the freedom of InterRail!

This InterRail Pass Guide has been designed to help you get the most out of your Pass. It includes information on how to use the Pass and handle reservations, and also gives an overview of additional benefits that your InterRail Pass entitles you to.

*Thank you for choosing
InterRail, enjoy your trip!*



How the InterRail Global Pass works



What does my InterRail Pass entitle me to?

Your Pass entitles you to transportation on all the national railways and shipping lines listed on your InterRail Global Pass Cover, and on some private railways listed in the 'Country Information' section of this guide. Please note that it is not valid for free travel in your country of residence (see Conditions of Use, article 3). Also not included are reservations costs and surcharges required for overnight beds and seats on certain international and high-speed trains. For more information, see the text on making reservations below and the 'Reservation costs & surcharges' table on the reverse of the InterRail Map.

InterRail travel documentation package

Your InterRail Global Pass travel documentation package includes this **InterRail Pass Guide**, an **InterRail Map** and the **InterRail Global Pass Cover** with a Travel Report inside. Important: the Pass Cover and Travel Report, together with an attached ticket, form the actual InterRail Global Pass.

How do I start using my InterRail Pass?

Once you have received your InterRail Pass, check it carefully to ensure that all of your personal details are correct. Should there be any mistakes, it is important to take it back to the point-of-purchase for correction before you start travelling. You can take your first trip with InterRail anytime after 00.00 hours on the first day that your Pass is valid. You must finish your last trip by midnight (24.00 hours) on the last day of validity.

How often can I travel?

It depends on the type of InterRail Pass you have. There are two sorts: 'Continuous' and 'Flexi'. The Continuous Pass can be used as often as you want during the time period it is valid for (15 days, 22 days or 1 month). The Flexi Pass can only be used for a specific number of travel days (5 or 10) during the overall period of validity. If you have a Flexi InterRail Pass, a Travel Calendar will be printed on your ticket. Flexi Pass holders: Please read the 'Using the Flexi Pass' section below carefully!

What is the InterRail Pass Cover for?

The InterRail Pass Cover protects your ticket, which is stapled inside. It also includes the Travel Report form that you must present, together with the ticket, to ticket inspectors. Fill in your personal and ticket details before you start using your InterRail Pass, and fill in the journey details before you enter any new train, ferry or bus when using your Pass for transportation or a discount.

The image shows a digital form titled "Travel Report" with the InterRail logo. The form is divided into sections. The first section explains the purpose of the report. The second section, "Personal details", contains fields for First name, Last name, Address, City, Postcode, Country, and Email. There are also checkboxes for age groups (under 26, 26-44, 45-59, 60+) and gender (Mr, Ms). A final section asks the user to tick boxes if they want a gift, return the report, or give permission for data use.

Travel Report
The information in Travel Report is what motivates the European Railway to keep participating in the InterRail system. Help us keep it going! When you're done travelling, please detach, fold, seal and mail in your report – no stamp required. In return, we can send you a gift!

Personal details

First name Age ☐ under 26 ☐ 26-44 ☐ 45-59 ☐ 60+

Last name ☐ Mr ☐ Ms

Address

City

Postcode

Country

Email

Please tick any box that applies:

- ☐ Please send me a gift 📁
- ☐ Please return my Travel Report
- ☐ I give EuroRail Group G.B.E. permission to use my personal details for research purposes, and to send me relevant InterRail information. EuroRail Group G.B.E. never passes your details on to third parties.

When do I need to make reservations?

Reservations, and the payment of an extra fee, are usually required on high-speed, international and night trains. Seats on such trains can be in high demand, especially to popular destinations such as Italy, France and Spain, and during the July and August high seasons. Furthermore, the number of seats allocated to InterRail Pass holders on these trains can be limited. Because of this, advance booking is strongly recommended – most trains can be booked up to 3 months in advance. Should seats for Pass holders be sold out for a train you want, your options are to purchase a full-fare ticket, try a different day or time, or consider taking an alternative route. Reservations can be made at railway station ticket counters, call centres or on some of the websites of participating railway companies.

Does my InterRail Pass entitle me to anything else?

Yes – to a great range of special benefits, including free or discounted transportation on European buses and ferries. See the benefits section for details.

Using the Flexi Pass

If you have a Flexi Pass, please read the following carefully to make sure you use it properly.

How do I fill in the Travel Calendar?

When travelling with a Flexi Pass, it is important that you record the date of each journey in the Travel Calendar (printed on the ticket). You must write in blue or black ink, and it is imperative to do this before boarding the train. Be very careful when filling in the date. If you make a mistake you cannot correct it, because this could be interpreted as an attempt at fraud. If you make a mistake, you will

Iarnród Éireann InterRail

CIV 0080
VALID: 12.01.2012 - 21.01.2012

FULL NAME: KIPRICH, BALÁSZ
COUNTRY: HUNGARY
PASS- / ID-NR: 110855396
DATE OF BIRTH: 11.07.1961

DATE	TIME	FROM	→	TO	DATE	TIME	CLASS
*	*	InterRail GLOBAL PASS			*	*	2
				FLEXI			

05 / 10 DAYS

TRAVEL CALENDAR BELOW MUST BE FILLED IN:

DAY	1	2	3	4	5
DAY:	14				
MONTH:	01				

VALID: ALL COMPANIES PARTICIPATING IN InterRail
ADULT ONLY VALID WITH PASSPORT/ID AND COVER
NOT VALID IN COUNTRY OF RESIDENCE

2028609 - 15477 30.09.2011

PRICE EUR ***259.00
PAGE 1/1

© CIT 1996 E 2028609

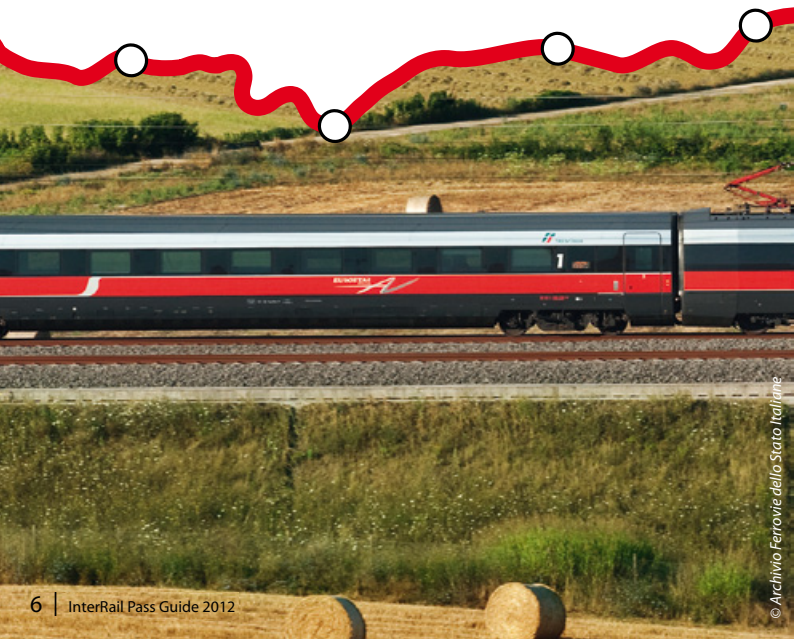
Travel day in Travel Calendar

have to enter the correct date in the next travel day box and will consequently lose a travel day.

Travel smart and save a travel day

Depending on the hour of departure of the night train chosen, there is a special InterRail offer that could save you a travel day.

- If you are travelling on a direct night train (with no connections or layovers) that departs after 19.00h and arrives after 04.00h, you only need to use one travel day – the day of arrival. For instance, if you take the direct night train from Budapest to Munich which departs on August 2nd at 21.05h, you only have to write August 3rd in the travel calendar on your Pass.
- When travelling by night ferry, you only have to use one travel day. You may fill in either the day of departure or arrival on your travel calendar.



- If your train departs before 19.00h, you need to use two travel days (fill in the day of departure in one set of boxes and the day of arrival in the next).

Please note that for all overnight trips, your Pass must be valid on the day of departure and arrival (Conditions of Use, article 7).

Do I have to keep anything in mind when making use of InterRail Pass extra benefits?

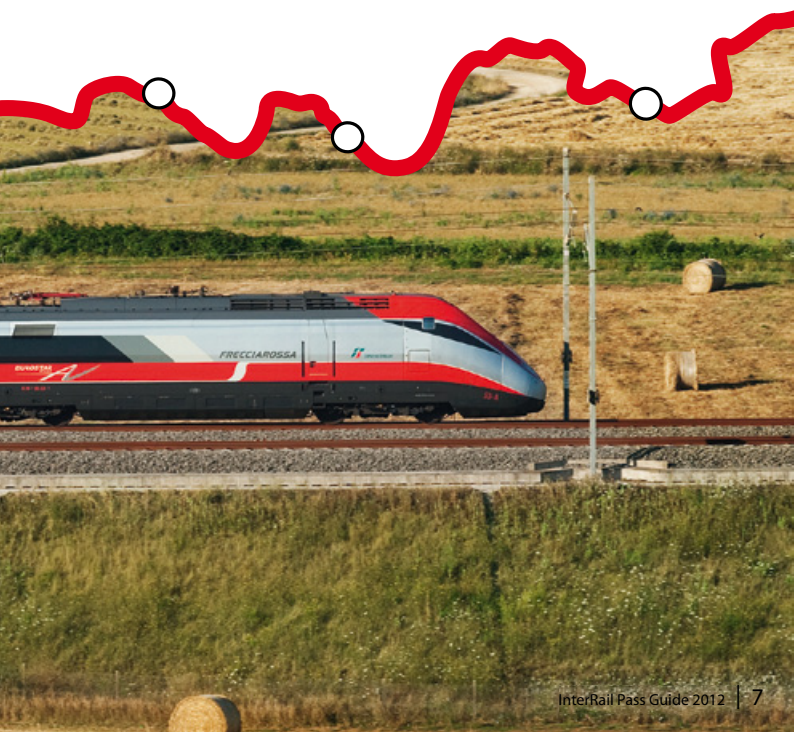
Yes. You may only make use of free transportation on a travel day that you have written on your ticket. Discounted travel, however, does not require use of a travel day. You can take advantage of this at any time (even if you have used all your travel days) as long as the journey takes place on or before the last day of the overall validity of the Pass.

Train types

There are a variety of different train types in Europe, each offering its own advantages and unique travel experiences.

Local trains

Easy, relaxed and intimate – that sums up the atmosphere of the countless local trains that you will find throughout Europe. Some of them only have 2nd class cars. Nowhere else will you get a better feel for the local people and European life than on these trains that weave their way from town to town, taking the locals to work, market or play.





The Nordland Railway between Trondheim en Bodø, Norway

Express day trains

There is also a full schedule of domestic and international trains that make fewer stops than local trains and get you to your destination more quickly. These are generally called InterCity (IC) or EuroCity (EC) trains. These trains sometimes require a seat reservation.

High-speed trains

Want to cover a long distance really fast, or as luxuriously as possible? There are many high-speed services that criss-cross Europe – all of them with comfortable 1st and 2nd class cars and catering services. Seat reservations are usually required, and additional costs must be paid. On the InterRail Map, high-speed lines are indicated by a purple or green line.

Legendary scenic rail routes

Europe is bursting with picturesque scenery that can be enjoyed from any type of train. But there are numerous train routes that are legendary for the magnificent vistas they pass through. InterRail Passes are valid for many of them, or entitle you to a discount. Reservations are sometimes required – they are always highly recommended. See the back of the InterRail Map for a sample of Europe's most scenic routes.

Night trains

Night trains run between many major European cities, and offer a variety of sleeping options for different budgets. Most of them require reservations and a supplement payment for the sleeping accommodation, but you can end up saving money since the supplement you pay can cost less than a hotel room would have. Some overnight trains offer reclining seats (generally only 2nd class), starting at € 5. Most offer standard couchettes as well as more luxurious sleepers, with the supplement ranging in price from € 15 to € 210.

Couchettes are compartments with four open bunks in 1st class and four or six open bunks in 2nd class. These are shared with other passengers of both sexes, and people generally sleep in their day clothes. A sheet, blanket and pillow are provided. Sleepers offer more comfort and privacy (one or two passengers in 1st class, and two or three in 2nd class), and usually have a private wash basin. They are allocated exclusively for either men or women, unless your party occupies all the beds in the compartment.



Night trains, Bulgaria

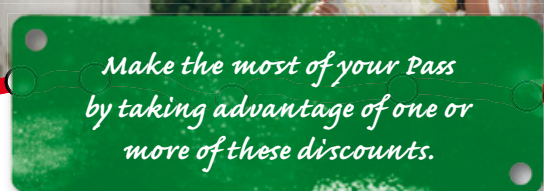
Night trains can save you money; often the bed or seat supplement costs are less than a hotel room.

Sleep tight...

On night trains, ticket and passport checks are sometimes conducted while you are sleeping. It is therefore quite common for the car attendant to collect your InterRail Pass and passport (or travel ID) for border formalities, so you won't have to be disturbed. Your documents will be returned to you in the morning. Just double-check that you have been given the right documents back.

To ensure that you have the best onboard experience, take a few sensible precautions: safely store your belongings and remember to lock the door of your cabin when you are inside.

Country Information and Extra Benefits



*Make the most of your Pass
by taking advantage of one or
more of these discounts.*

The following pages give an overview per country of the railway and shipping companies that participate in the InterRail Global Pass offer, as well as an overview of extra benefits that your Pass entitles you to. These benefits can usually be arranged locally at a ticket window. However, some benefits, mainly international shipping lines, can be booked in advance. You will find the necessary contact details for making reservations with the benefit partner concerned (phone number, email address or website). Please note that benefits may be subject to change without prior notice: before booking or buying a ticket, confirm that the company still honours the discount.

General



MP3 Audio City Guides 15% discount on over 300 audio city guides at All Audio Guides. To claim your discount and get your private city guide enter code: Interrail12 on www.allaudioguides.com/interrail.php

Trustive Mobile Internet Acces 20% discount on seamless WiFi internet access at 300,000 premium hotspots in 130 countries. Visit: <http://trustive.com/hotspots/> to check Trustive's WiFi coverage at your next destination. To claim your discount visit www.trustive.com/interrail2012.



Timetable app by Railteam: free download of Railteam app to your iPhone/Android/Blackberry or other mobile phones- see www.railteam.eu for more details.



Austria



A Pass valid in Austria is valid with the national railway company ÖBB (www.oebb.at) and is also valid on the railway lines operated by ROeEE/ Raaberbahn (www.gysev.hu).



Blue Danube Schiffahrt

20% discount;
www.ddsg-blue-danube.at

■ Sightseeing boat trips in Vienna and Wachau

Donauschifffahrt Wurm+Köck

7.5% discount on sailings on river Danube; www.donauschifffahrt.de. Only for sailings without additional services like e.g. a buffet or an overnight stay. Advance reservation is possible; Tel: +49 851 929 292 or info@donauschifffahrt.de

- Deggendorf: Festplatz, Eginger street
- Linz; dock Würm+Köck, Donaupark/Untere Donaulände
- Passau; dock no. 11, Fritz-Schäffer-Promenade



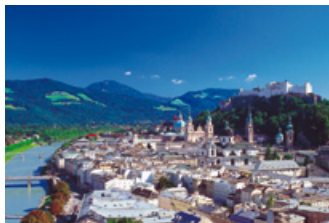
Meininger hotels 10% discount if you book directly with Meininger at www.meininger-hotels.com

- Located in Wien and Salzburg. All-you-can-eat breakfast is available, free WiFi in the lobby. Contact: welcome@meininger-hotels.com or +49(0)30 6663 6100



ÖBB Intercitybus (1st and 2nd class) free transportation; www.oebb.at

- Graz-Klagenfurt: reservation recommended
- Klagenfurt/Villach-Venezia Mestre & Venezia Tronchetto (supplements are required)



View on Salzburg and the river Salzach

Belgium



A Pass valid in Belgium is valid with the national railway company NMBS/SNCB (www.b-rail.be).

Eurostar special Pass holder fares.

Pass holder fares are exchangeable once before departure (non-exchangeable fares can sometimes be cheaper than Pass holder fares). All fares are subject to availability, bookings at www.eurostar.com, +44(0)123 361 7575 or +33(0)892 353 539

- London St Pancras-Brussels Midi



HUSA-Hotels 10% discount; www.husa.es

Discount on the best internet rate, not in combination with other offers. Book at www.husa.es; click on 'Identification' (top right of the webpage) login: RAIL PASS, password: EURAILINTERRAIL, or by tel. +34 902 100 710 (reference Eurail InterRail)

Bosnia Herzegovina



The national railway companies of Bosnia Herzegovina are ZFBH (Railway of the Federation of Bosnia Herzegovina, www.zfbh.ba) and ZRS (Railway of the Republic of Srpska, www.zrs-rs.com). A Pass valid in Bosnia Herzegovina is valid with ZFBH and ZRS.

Bulgaria



A Pass valid in Bulgaria is valid with the national railway company BDZ (www.bdz.bg).

Croatia



A Pass valid in Croatia is valid with the national railway company HZ Putnicki prijevoz (www.hznet.hr).



Croatia hotels 20% discount in hotels Porin (Zagreb), Dora

(Zagreb), Mursa (Osijek) and hotel Zeljeznicar (Split); www.croatia-express.com. Bookings via info@croatia-express.com. Discount upon presentation of your InterRail Pass, when paying the hotel.

Czech Republic



A Pass valid in the Czech Republic is valid with the national railway company CD (www.cd.cz).



CD lounges

Holders of a 1st class rail pass have free access to the CD lounges located in several railway stations.



Expressbus Nürnberg - Praha

6 times a day, travel time 3 hours 50 min (timetables at www.cd.cz and www.bahn.de); reservation compulsory. Tickets and reservations are available at railway ticket windows in Germany and in Praha.

Hertz Rent a Car 7% discount.

Located at the main station of Praha, Brno, Ostrava, Ostrava-Svinov and Olomouc. Details at www.cd.cz/cdbonus, go to advantages and search for Hertz. Please fill out a form in order to obtain the discount.



Orea Hotels Up to 20% discount upon presentation of your Pass. Phone +420 800 12 00 12; www.orea.cz



Railway Museum 20% discount. Museum located at Luzná u Rkovníka; www.cdmuzeum.cz

Prague Castle 20% discount for the 'Full Visit'; www.hrad.cz

More benefits For more benefits in the Czech Republic see www.cd.cz/cdbonus

Denmark



A Pass valid in Denmark is valid with the national railway company DSB (www.dsb.dk) and with the following private railway companies:

- Arriva
- DSB S-Tog
- DSB-First



Color Line 50% discount on normal fares (not on reclining seats or meals); www.colorline.com

- Hirtshals-Kristiansand
 - Hirtshals-Larvik
- Denmark +45 9956 2000; Norway +47 81 500 811

DFDS Seaways 25% discount on all categories except Commodore class:

- Copenhagen-Oslo
- Reservations: www.dfdsseaways.com/railpass (subject to availability).

Scandlines free transportation for train passengers; www.scandlines.de

- Helsingør-Helsingborg
- Puttgarden-Rødby Færge



DSB lounges

Holders of a 1st class rail pass have free access to the DSB lounges located in Århus, Copenhagen and Odense.



Jernbane museum 25% discount; www.jernbanemuseum.dk
Danish railway museum in Odense.



Nordjyske Jernbaner (Private railway) 50% discount

- Frederikshavn-Skagen
- Hirtshals-Hjørring

Finland



A Pass valid in Finland is valid with the national railway company VR (www.vr.fi).



Helsinki harbour



Finnlines 30% discount on regular passenger fares (cabins, port tax and meals excluded)

- Gdynia-Helsinki
- Helsinki-Travemünde
- Helsinki-Rostock

Information, reservations and online bookings: www.finnlines.com or call Germany +49 45 028 0543 or Sweden +46 771 340 940. Show your InterRail Pass at check-in.

Tallink Silja Oy 40% low season discount; 20% high season discount; www.tallinksilja.com

- Helsinki-Stockholm via Mariehamn
- Helsinki-Tallinn
- Stockholm-Turku via Mariehamn or Långnäs

Discounts are granted on the cabin category C-A, on Helsinki-Tallinn route from deck/star class. Port taxes are extra.

Finland +358(0)600 15700;
Sweden +46(0)822 2140

Viking Line Special price for Pass holders; www.vikingline.fi

- Turku/Helsinki-Stockholm (via Åland)



Railway Museums free admission

- Hyvinkää: www.rautatie.org
Hyvinkääntäti 9,
tel +358 (0) 3072 5241

- Jokioinen: www.jokioisten-museorautatie.fi; a narrow-gauge railway of 14 kilometers. At the station of Minkio there is a museum (open June - mid August).



Veljekset Salmela free bus transport upon presentation of InterRail Pass

- Kemi / Tornio - Haparanda

France



A Pass valid in France is valid with the national railway company SNCF (www.sncf.com and www.voyages-sncf.com).



Irish Ferries 30% discount; www.irishferries.com

- Cherbourg-Rosslare (February to December)*
- Roscoff-Rosslare (May to September)*

* not daily; reservation compulsory.

France +33(0)233 234 444;
Ireland +353(0)818 300 400



Admission with a discount

- France Miniature Parc in Elancourt; www.franceminiature.com

- Grévin Wax Museum in Paris: 20% off (www.grevin.com)



Chemins de Fer Corse

50% discount;

www.trainstouristiques-ter.com

- All train journeys in Corsica **Eurostar** special Pass holder fares. Pass holder fares are exchangeable once before departure (non-exchangeable fares can sometimes be cheaper than Pass holder fares). All fares are subject to availability, bookings at www.eurostar.com, +44(0)123 361 7575 or +33(0)892 353 539
- London St Pancras-Lille-Paris Nord



SNCF Bus free transportation

- Digne-St Auban
- Digne-Veynes
- Lyon-Chambéry-Torino
- Canfranc-Oloron

FYR Macedonia



A Pass valid in the FYR Macedonia is valid with the national railway company MZ Transport AD Skopje (www.mztransportad.com.mk).

Germany



A Pass valid in Germany is valid with the national railway company DB (www.bahn.de). For the validity of your InterRail Pass on trains operated by private railway companies please refer to www.eurailgroup.org/germanrailways.aspx



Donauschiffahrt Wurm+Köck

7.5% discount on sailings on river Danube; www.donauschiffahrt.de. Only for sailings without additional services like e.g. a buffet or an overnight stay. Advance reservation is possible; Tel: +49 851 929 292 or info@donauschiffahrt.de

- Deggendorf: Festplatz, Eginger street
- Linz; dock Würm+Köck, Donaupark/Untere Donaulände
- Passau; dock no. 11, Fritz-Schäffer-Promenade

Finnlines 30% discount on regular passenger fares (cabins, port tax and meals excluded)

- Gdynia-Rostock
- Helsinki-Travemünde
- Helsinki-Rostock
- Malmö-Travemünde: 20% discount

Information, reservations and online bookings: www.finnlines.com or call Germany +49 45 028 0543 or Sweden +46 771 340 940. Show your InterRail Pass at check-in.

Scandlines free transportation for train passengers; www.scandlines.de

- Puttgarden-Rødby Færge.



Expressbus Nürnberg - Praha

6 times a day, travel time 3 hours 50 min (timetables at www.cd.cz and www.bahn.de); reservation compulsory. Tickets and reservations are available at railway ticket windows in Germany and in Praha.

Free bus to Outlet Villages in Wertheim & Ingolstadt

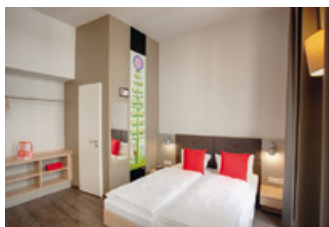
Free bus transfer on the 'Shopping Express Bus'. Buses run from Frankfurt Central Station to Wertheim and from Munich Central Station to Ingolstadt.

- Frankfurt - Wertheim Village (Monday to Saturday): bus departs at 9h30 from Frankfurt Central Station (from bus-stop 'Romantische Straße' - take the south exit towards coach parking which is opposite Mannheimerstrasse 15) or 10h00 Westin Grand Hotel (next to the underground station of 'Konstablerwache'). Departure back to Frankfurt: 15h00; www.coach.wertheimvillage.com

- Munich - Ingolstadt Village (Thursday & Saturday only): bus departs at 09h30 from Munich Central station (opposite the Karstadt Department Store) or 10h00 from Westin Hotel Grand Munich (Arabellastrasse 6). Departure back to Munich: 16h00; www.coach.ingolstadtville.com

Hard Rock Cafe München;

www.hardrock.com/munich
Address, Platzl 1-City center/across Hofbräuhaus; +49 (0)89 242 949 0. Show your InterRail Pass at Hard Rock Cafe Munich and receive either a complimentary Hot Fudge Sundae with any main meal purchased in the cafe or a complimentary gift in the rock shop with every purchase over € 30.



Hotel Meininger, Berlin

-  **Meininger hotels** 10% discount if you book directly with Meininger at www.meininger-hotels.com
 - Located in Berlin, Frankfurt, Munich, Cologne and Hamburg. All-you-can-eat breakfast is available, free WiFi in the lobby. Contact: welcomed@meininger-hotels.com or +49(0)30 6663 6100



Railway museum in Nürnberg

one free entrance per Pass holder; www.dbmuseum.de



S-Bahn free transportation on the S-Bahn in major German cities. S-Bahn can be recognised by the logo; white S on a green background.

Great Britain



The railway lines in Great Britain are operated by several private railway companies. Please consult <http://www.atoc.org/train-companies> for details



DFDS Seaways 25% discount on all categories except Commodore class

- Ummiden-Newcastle reservations: www.dfdsseaways.com/railpass (subject to availability)

Irish Ferries 30% discount; www.irishferries.com

- Dublin Ferryport-Holyhead
- Pembroke-Rosslare France +33(0)233 234 444; Ireland +353(0)818 300 400

Stena Line 30% discount; www.stenaline.com

- Fishguard-Rosslare: Express/ Superferry
- Harwich-Hoek van Holland: reservation compulsory
- Dublin Port-Holyhead Superferry Stena Adventurer
- Holyhead-Dun Loaghaire: HSS (High Speed Service) Summer only
- Cairnryan-Belfast: Superferry/ HSS
- Liverpool-Belfast: Superferry (day service) + 353 (0)8447 707070; in Ireland: 01204 7777



Eurostar special Pass holder fares.

Pass holder fares are exchangeable once before departure (non-exchangeable fares can sometimes be cheaper than Pass holder fares). All fares are subject to availability, bookings at www.eurostar.com, +44(0)123 361 7575 or +33(0)892 353 539

- London St Pancras-Lille-Paris Nord
- London St Pancras-Brussels Midi



Meininger hotels 10% discount if you book directly with Meininger at www.meininger-hotels.com

- Located in London. All-you-can-eat breakfast is available. Contact: welcome@meininger-hotels.com or +49(0)30 6663 6100

Greece



A Pass valid in Greece is valid with the national railway company TRAINOSE (www.trainose.gr).



Attica Group (InterRail member): Domestic routes:

Blue Star Ferries 30% discount only if you have already realised a crossing in the Adriatic Sea with Superfast Ferries or ANEK Lines (via Ancona); www.bluestarferries.com

- Piraeus - Cyclades

- Piraeus - Dodecanese

- Rafina - Cyclades

Reservations: +30 210 891 9800 or helpdesk@attica-group.com

Attica Group (InterRail member): jointly operated by Superfast Ferries and ANEK

Lines 30% discount provided you have already realised a crossing in the Adriatic Sea with Superfast Ferries or ANEK Lines (via Ancona); www.superfast.com; www.anek-superfast.com

- Piraeus - Heraklion (Crete)

Reservations: +30 210 891 9800, +30 210 891 9700 or helpdesk@attica-group.com

Attica Group (InterRail member): jointly operated by Superfast Ferries and ANEK

Lines Free air seats/dormitories for 1st class Pass holders, free deck passage for 2nd class Pass holders; www.superfast.com; www.anek-superfast.com

- Ancona-Igoumenitsa

- Ancona-Patras

Seasonal surcharge: June and September € 10 per person; July and August € 20 per person. Port taxes € 7 per passenger, per embarkation. A fuel surcharge may apply. Check-in time 2 hours.

Italy +39 071 202 033-4; +39 071 207 0218 (booth); info.

anconaport@superfast.com

Greece +30 210 891 9130

helpdesk@attica-group.com

Book online on www.superfast.com (=>partnerships=>Train & Ferry).

New terminal Station PATRAS:

South port, Akti Dymeon. A shuttle bus service between the New and the Old port (TRAINOSE railway station) is available. Passenger's check-in at the New port.

Terminal Station ANCONA: Via Luigi Einaudi, Zona Mandracchio.

Check-in at Terminal Station and



Superfast Ferry

then take shuttle bus no. 20 (FREE) to the port for embarkation!

Attica Group (InterRail member): Superfast Ferries

Free air seats/dormitories for 1st class Pass holders, free deck passage for 2nd class Pass holders ; www.superfast.com

- Bari-Corfu (sailings during summer period only)
- Bari-Igoumenitsa
- Bari-Patras

Seasonal surcharge: June and September € 10 per person; July and August € 20 per person. Port taxes € 7 per passenger, per embarkation. A fuel surcharge may apply. Check-in time 2 hours. Italy +39 080 528 2828 info. bariport@superfast.com Greece +30 210 891 9130 helpdesk@attica-group.com Online bookings on www.superfast.com (=> partnerships => Train & Ferry). New terminal Station PATRAS: South port, Akti Dymeon. A shuttle bus service between the New and the Old port (TRAINOSE railway station) is available. Passenger's check-in at the New port. Terminal Station BARI: Stazione Marittima Porto, 6, Corso Antonio de Tulio

HML, service operated by Endeavor Lines

- Patras-Brindisi, extra stops at Corfu & Cefalonia in the summer.
- In high season (15/06-15/09) 30% discount on all categories (except the luxury cabin); Outside the high season 50% discount. Information and booking: Brindisi +39 0831 528 531, Email: resa@hml.it and Rome +39 06 4740141, Email: hml.roma@tiscali.it

Minoan Lines Domestic 30% discount only if you have already realised (or reserved) a crossing in the Adriatic Sea with Minoan Lines Information and reservations:

Piraeus, Greece tel: +30 210 4145700, email: booking@minoan.gr; www.minoan.gr

- Corfu-Igoumenitsa
- Igoumenitsa-Patras
- Corfu-Patras
- Heraklion-Piraeus

Minoan Lines International

Free air-type seats for 1st class Pass holders. Free deck passage for 2nd class Pass holders.; www.minoan.gr

- Patras/Corfu/Igoumenitsa-Venice
 - Patras/Igoumenitsa-Ancona
- Seasonal surcharge: June/September: € 10, July//August: € 20. Port Taxes: € 7. Fuel surcharge may apply. Check-in time 2 hours. For more information: Italy, Ancona tel: +39 071 201708, email: minoan@minoan.it Italy, Venice tel: +39 041 240 7150, email: booking@minoanlines.it Greece, Piraeus tel: +30 210 4145700, email: booking@minoan.gr



Athens railway museum

free admission
Daily (except Mondays) 9:00am - 1:00pm + Wednesdays from 5:00pm - 8:00pm; 4, Siokou street, Athens

Hungary



A Pass valid in Hungary is valid with the national railway company MÁV-START (www.mav-start.hu) and is also valid on the railway lines operated by GySEV/ Raaberbahn (www.gysev.hu).



Hungarian Heritage Railway Park

50% discount on the entrance fee for the Hungarian Heritage Railway Park (seasonal opening hours). The Park can be reached from Budapest



© Hungarian National Tourist Office

Chain bridge, Budapest

Nyugati Railway Station with Desiro trains running towards Esztergom. (Passes accepted, no supplements). Address: Tatai út 95, 1142 Budapest, phone +36 1238 0558. www.mavnosztalgia.hu or www.vasutortenetipark.hu

www.stenaline.com

- Fishguard-Rosslare: Express/ Superferry
 - Dublin Port-Holyhead Superferry Stena Adventurer
 - Holyhead-Dun Loaghaire: HSS (High Speed Service) Summer only
 - Cairnryan-Belfast: Superferry/HSS
 - Liverpool-Belfast: Superferry (day service)
- + 353 (0)8447 707070;
in Ireland: 01204 7777

Ireland



A Pass valid in Ireland is valid with Irish Rail/Iarnród Éireann, the national railway company of the Republic of Ireland (www.irishrail.com) and with Translink NI Railways, the national railway company of Northern Ireland (www.translink.co.uk).



Irish Ferries 30% discount;
www.irishferries.com

- Cherbourg-Rosslare (February to December)*
- Dublin Ferryport-Holyhead
- Pembroke-Rosslare
- Roscoff-Rosslare (May to September)*

*No daily sailings, reservation compulsory.

France +33(0)233 234 444;

Ireland +353(0)818 300 400

Stena Line 30% discount;

Italy



A Pass valid in Italy is valid with the national railway company Trenitalia (www.trenitalia.com).



Attica Group (InterRail member): jointly operated by Superfast

Ferries and ANEK Lines Free air seats/dormitories for 1st class Pass holders, free deck passage for 2nd class Pass holders; www.superfast.com; www.anek-superfast.com

- Ancona-Igoumenitsa

- Ancona-Patras

Seasonal surcharge: June and September € 10 per person; July and August € 20 per person.

Port taxes € 7 per passenger, per embarkation. A fuel surcharge may apply. Check-in time 2 hours.

Italy +39 071 202 033-4; +39 071 207 0218 (booth); info.

anconaport@superfast.com

Greece +30 210 891 9130

helpdesk@attica-group.com

Book online on www.superfast.com

(=>partnerships=>Train & Ferry).

New terminal Station PATRAS:

South port, Akti Dymeon. A shuttle bus service between the New and the Old port (TRAINOSE railway station) is available. Passenger's check-in at the New port.

Terminal Station ANCONA: Via Luigi Einaudi, Zona Mandracchio.

Check-in at Terminal Station and then take shuttle bus no. 20 (FREE) to the port for embarkation!

Attica Group (InterRail member): Superfast Ferries Free

air seats/dormitories for 1st class

Pass holders, free deck passage

for 2nd class Pass holders ; www.superfast.com

■ Bari-Corfu (sailings during summer period only)

■ Bari-Igoumenitsa

■ Bari-Patras

Seasonal surcharge: June and

September € 10 per person; July

and August € 20 per person.

Port taxes € 7 per passenger, per embarkation. A fuel surcharge may apply. Check-in time 2 hours.

Italy +39 080 528 2828 info.

bariport@superfast.com

Greece +30 210 891 9130

helpdesk@attica-group.com

Online bookings on

www.superfast.com (=>

partnerships => Train & Ferry).

New terminal Station PATRAS:

South port, Akti Dymeon. A shuttle bus service between the New and the Old port (TRAINOSE railway station) is available. Passenger's check-in at the New port.

Terminal Station BARI: Stazione

Marittima Porto, 6, Corso Antonio de Tulio

Grimaldi Lines 20% discount on official fares (port taxes, fixed dues and special fares excluded);

www.grimaldi-lines.com

■ Barcelona-Civitavecchia Daily, except Sundays. In summer daily

■ Barcelona-Porto Torres (Sardinia) Low season: twice a week; mid season: three times a week; high season: daily

■ Barcelona-Livorno 3 times a week

■ Civitavecchia-Tunis (Tunisia) once a week

■ Civitavecchia-Porto Torres (Sardinia) Low season: twice a week; mid season: three times a week; high season: daily

■ Civitavecchia-Trapani once a week

■ Livorno-Tangier (Morocco) once a week

■ Palermo-Tunis (Tunisia) twice a week

■ Palermo-Salerno twice a week

■ Salerno-Tunis (Tunisia) twice a week

■ Trapani-Tunis (Tunisia) once a week

Buy your ticket on www.grimaldi-lines.com and then fill in the form EURAIL INTERRAIL. The discount will be refunded on your credit card

Italy: +39 081 496 444;

Fax +39 081 551 7716;

email: info@grimaldi.napoli.it

HML, service operated by Endeavor Lines

■ Patras-Brindisi, extra stops at Corfu & Cefalonia in the summer.

In high season (15/06-15/09) 30% discount on all categories (except the luxury cabin); Outside the high season 50% discount. Information and booking: Brindisi +39 0831 528 531, Email: resa@hml.it and Rome +39 06 4740141, Email: hml.roma@tiscali.it

Minoan Lines International

Free air-type seats for 1st class Pass holders. Free deck passage for 2nd class Pass holders.; www.minoan.gr

■ Patras/Corfu/Igoumenitsa-Venice

■ Patras/Igoumenitsa-Ancona

Seasonal surcharge: June/September: € 10, July//August: € 20. Port Taxes: € 7. Fuel surcharge may apply.

Check-in time 2 hours.

For more information:

Italy, Ancona tel: +39 071 201708, email: minoan@minoan.it

Italy, Venice tel: +39 041 240 7150, email: booking@minoanlines.it

Greece, Piraeus tel: +30 210 4145700, email: booking@minoan.gr

Square (Doge's Palace, Museo Correr - integrated itinerary with the Museo Archeologico Nazionale and the Monumental Rooms of the Biblioteca Nazionale Marciana). Seasonal discount, please check if discount is valid at the moment of your visit on www.visitmuve.it, corporate partnership section.



SNCF Bus to France free transportation

■ Torino-Chambéry-Lyon

ÖBB Intercitybus (1st and 2nd class) free transportation, reservation recommended.; www.oebb.at

■ Klagenfurt/Villach-Venezia Mestre & Venezia Tronchetto (supplements are required)



Palazzo Strozzi, Firenze



Palazzo Strozzi, Firenze 20% discount on full-price exhibition ticket and 10% discount on exhibition catalogues for most exhibitions held at the Piano Nobile of Palazzo Strozzi (Firenze, Piazza Strozzi, tel +39 055 2645155) www.palazzostrozzi.org (Please ask for your discount when you purchase your ticket at the ticket office or online)

Venice Civic Museums Reduced tickets at € 12 instead of €14, as well as fast access to avoid queues, to the Marciana Area Museums, located in the centre of Venice, at San Marco



A Pass valid in Luxembourg is valid with the national railway company CFL (www.cfl.lu). Trains only.

Montenegro



A Pass valid in Montenegro is valid with the national railway company ZCG (www.zeljeznica.cg.yu).

The Netherlands



A Pass valid in the Netherlands is valid with the national railway companies NS, NS Hispeed and on the following private railway lines in the Netherlands:

- Arriva
- Connexion
- DB Regio Westfalen / Prignitzer Eisenbahngesellschaft
- DB Regiobahn / AVV
- Eurobahn / Keolis
- Synthus
- Veolia



Amsterdam

© David Spencer



DFDS Seaways 25% discount on all categories except Commodore class

■ IJmuiden-Newcastle
reservations: www.dfdsseaways.com/railpass (subject to availability)

Stena Line 30% discount;
www.stenaline.com

■ Harwich-Hoek van Holland:
reservation compulsory
+ 353 (0)8447 707070; in Ireland:
01204 7777



NS Hispeed lounges

On the day of travel, holders of a 1st class reservation have free access to the NS Hispeed lounges. The lounges are located at the following railway stations: Amsterdam, Breda, Rotterdam and Schiphol. Lounges are open from 8am to 8pm on Monday to Friday and from 10am to 6pm on Saturdays, Sundays and Public holidays.



Color Line 50% discount on normal fares (not on reclining seats or meals); www.colorline.com

■ Hirtshals-Kristiansand
■ Hirtshals-Larvik
Denmark +45 9956 2000;
Norway +47 81 500 811

DFDS Seaways 25% discount on all categories except Commodore class

■ Copenhagen-Oslo
reservations: www.dfdsseaways.com/railpass (subject to availability)

Fjord 1 Fylkesbaatane 50% discount (tickets can be bought locally, no reservation needed); www.fjord1.no

■ Flåm-Gudvangen
■ Gudvangen-Kaupanger-Laerdal



InterRail Center Trondheim;

www.tirc.no

■ Open from 1st July until 8th August. Free entrance, bed and breakfast at favourable rates.



Railway museum in Hamar

free admission;
www.norsk-jernbanemuseum.no



The Flåm Railway 30% discount (tickets can be purchased at any station. No reservation needed for individuals); www.flamsbana.no

■ Flåm-Myrdal

Norway



A Pass valid in Norway is valid with the national railway company NSB (www.nsb.no). 1st class carriages are not available in Norway; NSB offers Komfort class to 1st class Pass holders on most trains, seats are subject to availability. Advance reservation is not compulsory, but highly recommended. When obtained locally, reservations are free for 1st class Pass holders. Booking at NSB stations or NSB Callsenter + 47 -815 00 888.



Nettbus Møre AS 50% discount; tickets can be bought on the bus (cash payment). For timetables see www.NSB.no. Buses depart/arrive at Åndalsnes bus station just behind the station building; www.nettbuss.no

■ Ålesund-Åndalsnes bus services

Veøy Buss AS 50% discount (no reservation needed, tickets can be bought from the driver (cash payment); www.veoy.no

■ Åndalsnes-Molde bus services

Poland



A Pass valid in Poland is valid with the PKP dependent railway company: PKP Intercity JSC (www.pkp.pl) and valid with the following companies owned by local governments:

- KM Koleje Mazowieckie
- Przewozy Regionalne (Regional Services)



Finnlines 30% discount on regular passenger fares (cabins, port tax and meals excluded)

- Gdynia-Helsinki
- Gdynia-Rostock

Information, reservations and online bookings: www.finnlines.com or call Germany +49 45 028 0543 or Sweden +46 771 340 940. Show your InterRail Pass at check-in.



PKP lounge

Holders of a 1st class rail pass have free access to the PKP lounge (Strefa VIP) at Warszawa Centralna.

reservation valid within 3 days before or after the date of the tour for one of the following trains: Alfa Pendular (AP), Intercidades (IC), Sud Expresso or Lusitânia.



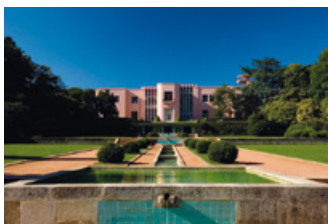
CP lounge

Two hours previous to departure or after arrival, holders of a 1st class train reservation for the trains Alfa Pendular (AP), Sud Expresso or Lusitânia have free access to the CP lounge located in Lisboa Oriente.



Oceanário 15% discount; www.oceanario.pt

- located near Lisboa Oriente railway station



Serralves park, Porto

Portugal



A Pass valid in Portugal is valid with the national railway company CP (www.cp.pt).



Carristur; www.carristur.pt

- Lisboa: A special €2 fare on board the Aerobus buses* between the airport and railways stations of Oriente, Entrecampos, Sete Rios, Rossio and Cais do Sodré, stopping at key points around the city. Tickets can be bought on the bus.
- 25% discount on touristic bus tours in Porto, Braga, Coimbra and Lisboa* by CARRISTUR. Tickets can be bought on the bus.

*It is necessary to present a

Serralves Museum in Porto

25% discount on entrance fees for both museum and garden. Free for those under 18 years of age; www.serralves.pt

Romania



A Pass valid in Romania is valid with the national railway company CFR Calatori (www.cfrcalatori.ro).



Hotels in Romania

- Hotel Alexandros and Lotru Villa in Busteni: 30% discount from reception rates. The reservation has to be made 15 days in advance via www.hotel-alexandros.ro; telephone + 40 (0) 244 320 138;

fax +40 (0) 244 320 056

- Hotel Crowne Plaza in Bucharest: 20% discount from best available rate on the official website www.crowneplaza.com/bucharest via reservations@crowneplaza.ro or by telephone: +40 (0) 212 240 034.
- Hotel Europa in Eforie Nord: 30% discount from best available rate on the official website www.anahotels.ro; telephone +40 (0) 241 702 810



Romanian railway museum 50% discount; www.cenafer.ro

- Bucuresti: Nord station, Str. Grivitei nr. 193 B, sect 1

Serbia



A Pass valid in Serbia is valid with the national railway company ZS (www.serbianrailways.com).

Serbian Railway museum free admission. The museum is located in the main building of the Serbian Railways (Železnice Srbije), about 100 m from Belgrade's railway station (6, Nemanjina Street).

Slovakia



A Pass valid in Slovakia is valid with the national railway company ZSSK (www.slovakrail.sk).

Čiernohorská železnica railway line: Up to 50% discount; www.chz.sk

Historic woodland railway line founded in 1909 and operating vintage wooden passenger trains on a 14 km route:

- Chvatimech - Čierny Balog - Vydrovská dolina.

Trains run daily from May 1st to September 15th and upon request

for the rest of the year. Reservation recommended for groups.



AquaCity - Poprad: 20% discount on all services + seasonal bonus www.aquacityresort.com/en/. Applicable upon presentation of the InterRail Pass. Reservation recommended for accommodation. Tel. +421 5278 51 111

Mercure Bratislava Centrum: up to 25% on accommodation upon presentation InterRail Pass www.mercure.com Tel :(+421)257277000 Email: H6840@accor.com Zabotova street 2 Bratislava

Golden Royal Boutique hotel & Spa in Košice: up to 25% discount on services and accommodation. Applicable at the moment of payment upon presentation of the InterRail Pass. Bookings at www.goldenroyal.sk/en/, address: Vodná 8, Košice

Slovenia



A Pass valid in Slovenia is valid with the national railway company SZ (www.slo-zeleznice.si).



SZ Spa and hotel

- Laško Wellness Park and Zdravilišče Laško:
 - 20 % discount on the use of swimming pool, sauna and on both activities combined with lunch; www.thermana.si/en/
 - 10 % discount on medical treatment and related services, Thermana, Hotels and Resorts, Zdravilišča c. 4, Laško. Tel: +386 (0) 34232300 or info@thermana.si
- Olimia Terme: 30% discount on the aqua park access. Address: Zdraviliška cesta 24, Podčetrtek. info@terme-olimia.com

- Hotel Park Ljubljana: 15% discount www.hotelpark.si. Address: Tabor 9, Ljubljana; +386 13002500 info@hotelpark.si
- Bohinj Park hotel: 10% discount on aquapark access - swimming pool. Address: Triglavska cesta 17 Bohinjska Bistrica; www.bohinj-park-hotel.si/eng/

- Barcelona-Tangier (Morocco) once a week

- Barcelona-Livorno 3 times a week

Buy your ticket on www.grimaldi-lines.com and then fill in the form EURAIL INTERRAIL. The discount will be refunded on your credit card Italy: +39 081 496 444; Fax +39 081 551 7716; email: info@grimaldi.napoli.it

Spain



A Pass valid in Spain is valid with the national railway company RENFE (www.renfe.com).



Osborne bull



Balearia 20% discount on official seat fares; www.balearia.com

- Various crossings between the Balearic islands
 - Barcelona-Palma de Mallorca/ Ciutadella/Ibiza/Mahon
 - Denia-Ibiza/Formentera
 - Palma de Mallorca-Valencia
- Tickets and reservations available in travel agencies or locally in Balearia offices or at +34 902 160 180.

Grimaldi Lines 20% discount on official fares (port taxes, fixed dues and special fares excluded); www.grimaldi-lines.com

- Barcelona-Civitavecchia Daily, except Sundays. In summer daily
- Barcelona-Porto Torres (Sardinia) Low season: twice a week; mid season: three times a week; high season: daily



FEVE 50% discount; tickets available in FEVE stations, tel: +34 985 982 380; www.feve.es

- Cartagena - Los Nietos
- León - Bilbao
- Oviedo - Ferrol / Santander
- Santander - Bilbao
- Local lines in Asturias, Galicia, Cantabria, Vizcaya, León and Murcia

FGC (Ferrocarrils de la Generalitat de Catalunya) 50% discount (Tickets available in FGC stations); www.fgc.net

- Barcelona-Vallès
- Cable line of Gelida-Cable line of Montserrat
- Anoia-Llobregat
- Monistrol-Montserrat: rack line
- Nuria-Ribes de Fresser: rack line



HUSA-Hotels 10% discount; www.husa.es

Discount on the best internet rate, not in combination with other offers.

Book at www.husa.es (click on 'Identification' (top right of the webpage) login: RAIL PASS, password: EURAILINTERRAIL) or by tel. +34 902 100 710 (reference Eurail InterRail)



Railway Museums 50% discount www.museodelferrocarril.org (tickets available at the museum)

- Barcelona: Vilanova i la Geltru, Pl. Eduard Maristany s/n
- Madrid: Paseo de las Delicias, 61



View on the Royal Castle, Stockholm



Valencia, RENFE bus free transportation between Valencia Joaquín Sorolla and Nord stations when you reserved for the AVE train

SNCF Bus to France free transportation

- Canfranc-Oloron



Sala Club lounge

Two hours previous to departure, holders of a Club, Business, Gran Clase or Preferente 1st class train reservation have free access to the Sala Club lounge located in several main railway stations.

- Värmlandstrafik (local train services in Värmland)
- Västtrafik (local train services in Western Sweden)
- Veolia



Destination Gotland special fare; www.destinationgotland.se

- Nynäshamn-Visby
- Oskarshamn-Visby

Finnlines 20% discount on regular passenger fares (cabins, port tax and meals excluded)

- Malmö-Travemünde:
- Information, reservations and online bookings: www.finnlines.com or call Germany +49 45 028 0543 or Sweden +46 771 340 940. Show your InterRail Pass at check-in.

Scandlines free transportation; www.scandlines.de

- Helsingør-Helsingborg

Tallink Silja Oy; 40% low season discount; 20% high season discount; www.tallinksilja.com

- Helsinki-Stockholm via Mariehamn
- Riga (Latvia)-Stockholm
- Tallinn (Estonia)-Stockholm
- Stockholm-Turku via Mariehamn or Långnäs

Discounts are granted on the

Sweden



A Pass valid in Sweden is valid with the national railway company SJ (www.sj.se) and also valid on the following private railway lines:

- Arlanda Express
- Arriva
- DSB First
- Inlandsbanan
- JLT (local train services in Småland)
- Norrtåg
- Skånetrafiken
- Tågkompaniet

cabin category C-A, on Helsinki-Tallin route from deck/star class.
Port taxes are extra.
Finland +358(0)600 15700; Sweden +46(0)822 2140

Viking Line Special price for Pass holders; www.vikingline.fi

- Turku/Helsinki-Stockholm (via Åland)



Länstrafiken in Norrbotten

free bus transportation

- Haparanda-Luleå

Veljekset Salmela free bus transportation (upon presentation of InterRail Pass)

- Kemi / Tornio-Haparanda



Museum railway Smalsparet

30% discount

- Hultsfred-Västervik

Traffic in summer only (July-August); www.smalsparet.se

Sveriges Järnvägsmuseum (Railway museums) 50%

discount; www.trafikverket.se

- Ängelholm

- Gävle



SJ lounges

Holders of a 1st class rail pass have free access to the SJ lounges in Stockholm and Göteborg.

Switzerland



A Pass valid in Switzerland is valid with the national railway company SBB (www.sbb.ch) and also valid with the following private transport companies:

- BLS AG
- FART Regional lines Ticino, including the Centovalli railway to Domodossola (Italy)
- MOB Montreux Oberland Bernois
- RhB Rätische Bahn AG (For Bernina Express, see further)
- SOB Südostbahn

- SSIF Società Subalpina di Imprese ferroviarie
- THURBO AG
- Voralpen-Express
- ZB Zentralbahn AG



Swiss private boat companies

50% discount

- BLS on Lake Brienz and Lake Thun; www.bls.ch
- BSG on Lake Biel and on the river Aare between Biel and Solothurn
- CGN on Lake Geneva; www.cgn.ch
- SGV on Lake Luzern
- URh on the river Rhine between Constance and Schaffhausen
- ZSG on Lake Zurich; www.zsg.ch

Wilhelm Tell Express discounted fare; www.wilhelmtellexpress.com

- Nostalgic boat crossing Luzern-Flüelen and connecting train ride to Locarno/Lugano, reservation compulsory



Bernina express; www.rhb.ch

- Chur/St Moritz - Tirano reduced fare for compulsory reservation Chur/St Moritz-Tirano

Pilatusbahnen 30% discount; www.pilatus.ch

- Kriens-Mount Pilatus by cable car
- Alpnachstad-Mount Pilatus by rack railway



SBB lounge

Holders of a 1st class rail pass have free access to the SBB lounge in Zürich HB.



Swiss private companies

50% discount

- AB Appenzeller Bahnen
- ASM Aare Seeland Mobil AG
- CJ Chemins de fer du Jura
- FB Forchbahn AG
- GGB Gornergratbahn (Youth Pass-holders only)

- LAF Adliswil - Felsenegg
- LEB Lausanne - Echallens - Bercher
- MBC Bière - Apples - Morges
- MGB Matterhorn - Gotthard Bahn (Youth Pass-holders only) (Glacier Express)
- MVR Transports Montreux - Vevey - Riviera
- NStCM Chemin de Fer Nyon - St-Cergue - Morez
- RA RegionAlps Martigny - Orsières / Le Châble
- RB Rigi-Bahn
- RBS Regionalverkehr Bern Solothurn
- SMF-Ism Stöckalp - Melchsee - Frutt
- SMTs St-Imier - Mont-Soleil
- SthB Stanserhornbahn
- SZU Sihltal - Zürich - Uetliberg
- TMR Martigny - Châtellard
- TPC Transports publics du Chablais
- TPF Transports publics Fribourgeois
- TRAVYS SA
- TRN Transports régionaux Neuchâtelois
- WB Waldenburgerbahn

- WSB Wynental - und Suhrentalbahn

Turkey



A Pass valid in Turkey is valid with the national railway company TCDD (www.tcdd.gov.tr)



TCDD

- Tatvan - Van

Free crossings on Lake Van between Tatvan and Van on Tuesdays and Fridays, when international trains are passing



TCDD Railway museum Free entrance to the Orient Express Railway Museum at Istanbul Sirkeci railway station; www.tcdd.gov.tr/tcdding/istanbul_ing.html



Don't forget to send us your Travel Report to receive a free InterRail gift!



BLS steamer on lake Thun

Participating companies

AUSTRIA

ÖBB



BELGIUM

NMBS/SNCB



BOSNIA HERZEGOVINA

ŽFBH / ŽRS



BULGARIA

BDŽ



CROATIA

HŽ



CZECH REPUBLIC

ČD



ČESKÉ DRÁHY, a. s.

DENMARK

DSB



FINLAND

VR



FRANCE

SNCF



FYR MACEDONIA

CFARYM



GERMANY

DB



GREAT BRITAIN

ATOC



GREECE

TRAINOSE



HUNGARY

MÁV-START



IRELAND

IE / NIR



ITALY

TRENITALIA



LUXEMBOURG

CFL



MONTENEGRO

ŽCG



THE NETHERLANDS

NS / NSHSPEED



NORWAY

NSB



POLAND

PKP



PORTUGAL

CP



ROMANIA

CFR



SERBIA

ŽS



SLOVAKIA

ZSSK



SLOVENIA

SŽ



SPAIN

RENFE



SWEDEN

SJ



SWITZERLAND

SBB/CFF/FFS



TURKEY

TCDD



InterRail Global Pass

Conditions of Use



1. InterRail Pass definition

An InterRail Global Pass consists of a ticket and a Pass Cover that includes the Travel Report. Neither the ticket nor the Pass Cover is valid on its own. Those who travel using one without the other risk payment of a full-fare ticket and a fine, subject to the rules of the national railway company.

2. Countries and companies for which the InterRail Global Pass is valid

The InterRail Global Pass is valid for travel with the participating railway and shipping companies in the 30 countries listed on the InterRail Pass cover.

3. Travelling within your own country

An InterRail Global Pass is not valid for travel in your country of residence. For travel in your country of residence, you need to buy a regular ticket. These tickets are often sold at a reduced fare to InterRail Pass holders if purchased in the country of residence while your Pass is valid.

4. An InterRail Pass is strictly personal

An InterRail Pass is strictly personal, non-transferable and valid only upon presentation of a passport or other recognised travel identification document. Those who travel without a passport or a legal equivalent to be presented together with the Pass risk payment of a full-fare ticket and a fine.

5. Recording personal, ticket and journey details in the Travel Report

All InterRail Pass holders must fill in the personal and ticket details on the Pass Cover Travel Report before using the Pass. Before boarding a train, bus or boat, each journey must be recorded in the Journey Details section of the Travel Report in blue or black ink. Those who travel without having recorded these details risk payment of a full-fare ticket and a fine.

6. Flexi Pass: Filling in the Travel Calendar box

Flexi Pass holders may choose the days on which they travel within

a longer period of overall validity. Before boarding the first train, bus or boat on a travel day, the date must be correctly entered in blue or black ink in the corresponding Travel Calendar boxes on the ticket. Those who travel on a date that has not been entered on the ticket risk payment of a full-fare ticket and a fine. Once entered, a travel date may not be corrected, as it can be considered an attempt at fraud. If you make a mistake, the correct date must be entered in the next travel day box which means that you lose a non-refundable travel day.

7. Flexi Pass: Overnight journeys

If a trip on a direct overnight train departs after 19.00h and arrives after 04.00h, it is only necessary to enter the date of arrival in the Travel Calendar boxes on the ticket. This also covers travel between 19.00h and 24.00h on the day of departure, as long as the day of departure and arrival both fall within the overall period of the Pass's validity. When using an overnight ferry covered by the Pass, either the date of departure or arrival may be entered in the Travel Calendar boxes on the ticket.

8. Misuse of an InterRail Pass

Aside from the payments and fines detailed above in connection with incorrect use of an InterRail Pass by the legal Pass holder, railway staff are authorised to confiscate a Pass which appears to be forged, which is being used by anyone other than the person to whom it was issued, or on which personal details or travel dates have been altered. This can be considered to be an attempt to perpetrate fraud against both Eurail Group and the national railway company they are travelling on. This will be reported to legal authorities, who will determinate the proper penalties.

9. Period of validity

An InterRail Pass is valid within the overall time period indicated on the Pass. Travel can begin after 00.00 hours on the first day printed on the Pass, and the last trip must be finished by midnight (24.00 hours) on the last day of validity.

10. 1st and 2nd class

An InterRail Pass is valid for travel in the class indicated on the ticket. 1st class passes are also valid in 2nd class cars. Those wishing to travel 1st class with a 2nd class pass must pay the full difference between 1st and 2nd class fare on the respective route. There is no refund for 1st class Pass holders travelling in 2nd class.

11. Eligibility

An InterRail Pass may only be used by residents of Europe, the Russian Federation or Turkey.

12. Seat availability and reservations

An InterRail Pass does not guarantee a seat in a train or boat, unless a reservation is secured in advance. For certain trains and ships,

reservations are compulsory and surcharges may apply. Fees for seat reservations, sleeping accommodation, port taxes, meals, and other services while onboard trains and boats are not included in the Pass.

13. Lost, stolen or damaged passes

A duplicate InterRail Pass unfortunately cannot be issued for those that are lost, stolen, or damaged in such a way that they are unusable.

14. Refund policy

Refunds can be applied for if an InterRail Pass is returned to the point of sale before the first day of validity, or up to one month after the last day of validity if the Pass has been certified as “UNUSED” by a European railway before the first day of validity. In both cases, the entire cost is refunded, less a 15% cancellation fee. Passes that are (partially) used, lost, damaged or stolen will not be refunded or replaced.

15. Compensation policy in event of train delays

In the event that you experience three or more train delays that are longer than 60 minutes each, you can request compensation from the Eurail Group. For further information, please refer to www.eurailgroup.org/compensation.aspx

16. Responsibility

Eurail Group G.I.E. cannot be held responsible for damages or extra costs incurred due to loss of baggage, theft, force majeure, strikes, or cancelled trains. However, in some of these cases, the Conditions of Carriage from the specific carrier may be favourable to claims.

17. Liability

Issuing offices and the Eurail Group G.I.E. act only as the intermediary of European carriers, and are not liable for operation of national rail services.

18. Legal provisions

For an InterRail Pass valid in more than one country, transportation is subject to the “Uniform Rules concerning the contract for GCC-CIV/PRR”. For InterRail Passes valid in one country only, the legal provisions of that country apply. For journeys by sea, the legal provisions of the individual sea carrier apply. In the event of a conflict between English and other translated texts, the English text (see www.eurailgroup.org/InterRailCOU.aspx) shall prevail.



English version
Produced by Eurail Group GfE

